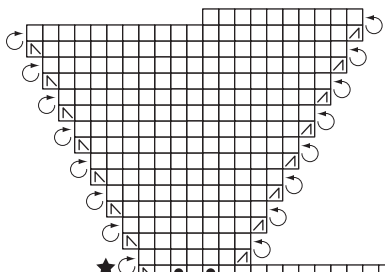


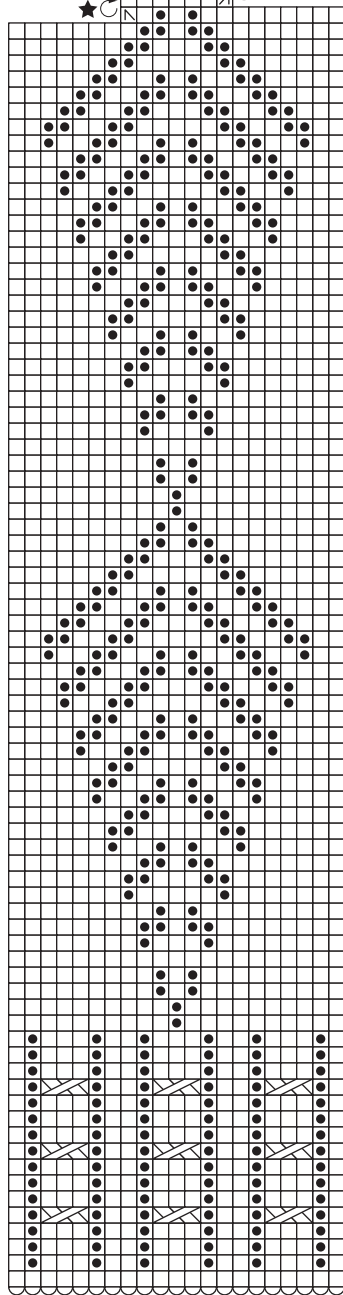
Pine Tree Sock Pattern *(start at the bottom right corner of the chart)*

by Katherine Misegades

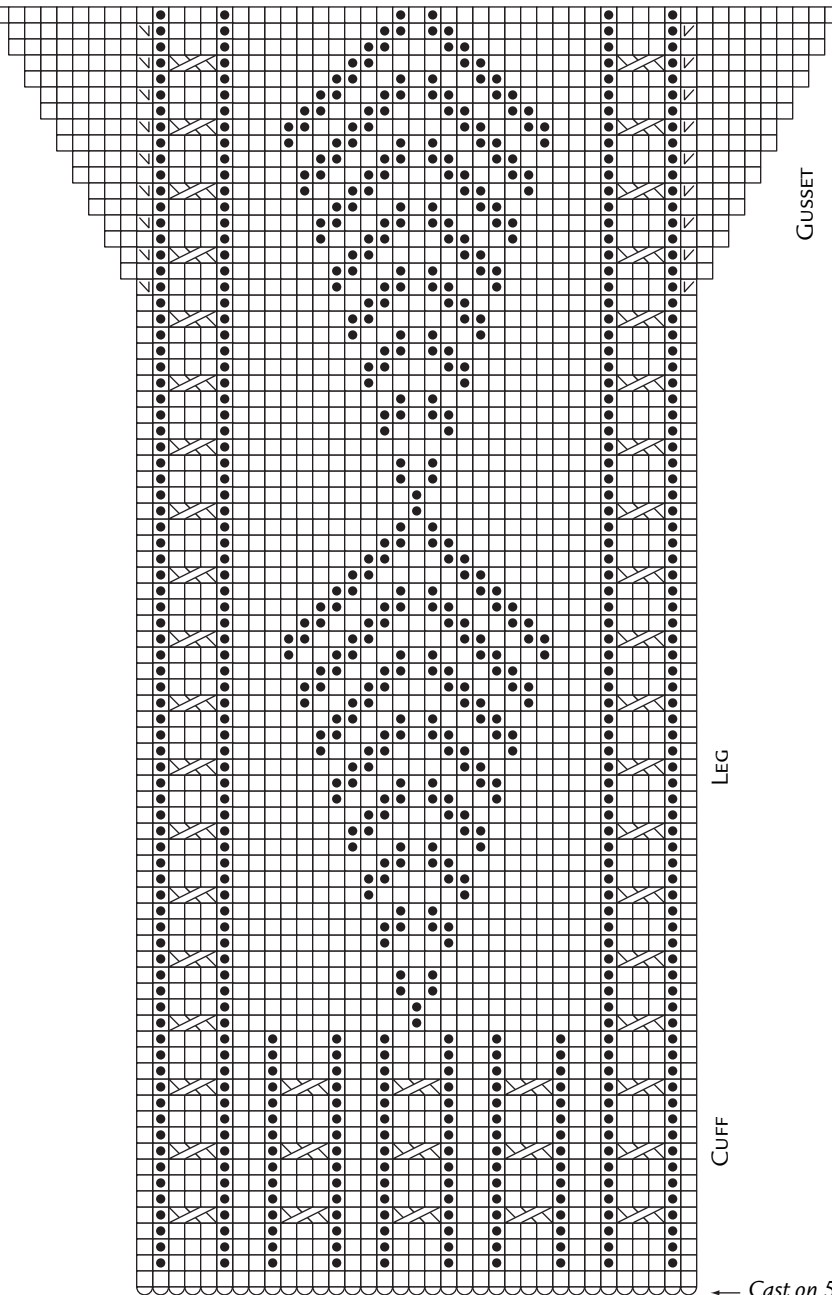
This sock is knit using DK weight yarn and U. S. #2 needles. The key for the chart symbols, a diagram for working lifted increases and the chart for working the foot and toe are on page 2. Read and follow the charts right-to-left, bottom-to-top while knitting in the round.



To work the heel turn, knit back and forth in short rows as follows:
 After ssk at ★, yarn to front, sl1, yarn to back, put sl1 back on left needle, turn. Wrong side facing, purl sts as shown on chart, p2tog, yarn to back, sl1, yarn to front, put sl1 back on left needle, turn. Right side facing, knit to wrapped st, ssk wrapped st together with next st, wrap next st and put sl st back onto left needle, turn. Continue back and forth as shown on chart, then go to page 2.



CENTER BACK



CENTER FRONT

HEEL

GUSSET

LEG

CUFF

← Cast on 56 sts

Beginning of round
 moves along this edge of the chart
 Read bottom to top, right to left

... and a time to knit stockings



